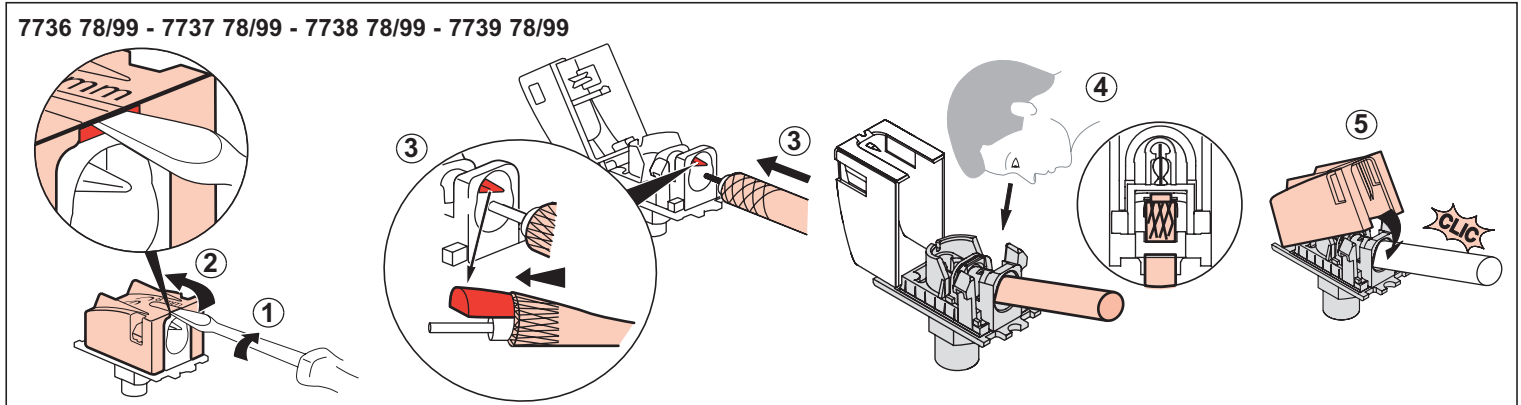
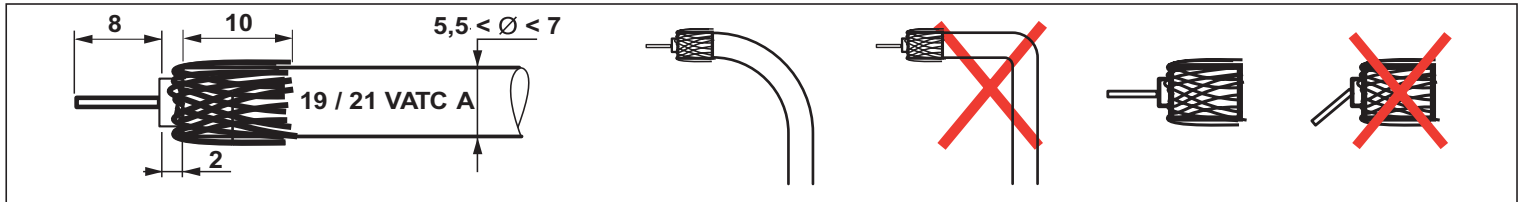




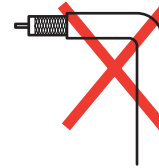
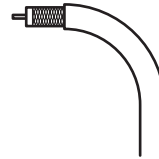
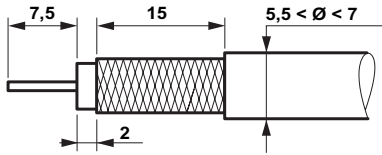


 773X 78	Coax	Attenuation	 500 mA	Control	Return path	Channel 1	Channel FM	Channel VHF	Channel UHF	Channel SAT
	Z = 75 Ω		500 mA							
 773X 99	 dB	 mA	22 / 0,6 KHz / V	4 – 30 MHz	47 – 68 MHz	87,5 – 108 MHz	120 – 470 MHz	470 – 862 MHz	950 – 2400 MHz	
	 TV Ⓧ	i < 1,5 dB								



	Coax	Attenuation		Control	Return Path	Channel 1	Channel FM	Channel VHF	Channel UHF	Channel SAT
	Z = 75 Ω		500 mA							
			—	22 / 0,6	4 – 30	47 – 68	87,5 – 108	120 – 470	470 – 862	950 – 2150
		dB	mA	KHz / V	MHz	MHz	MHz	MHz	MHz	MHz
773X 79	TV	 < dB								
773X 80		 < dB								
		i = 10 dB								
		i = 14 dB								



7736 79/80 - 7737 79/80 - 7738 79/80 - 7739 79/80

